

# Elim Lutheran Church

Sunday School/Adult Education 9 a.m.  
Worship Service 10:00 a.m.

575 23d Street • Ogden, UT 84401  
Phone 801-394-5543 • Fax 801-394-5547  
www.elimlutheran.org • office@elimlutheran.org

NON PROFIT ORG.  
U.S. POSTAGE  
PAID  
OGDEN, UTAH  
PERMIT 607

RETURN SERVICE  
REQUESTED

# THE Elim Scribe

Volume 67, Issue 2

February 2017

## Be My Valentine!

Pastor Bruce Kolasch

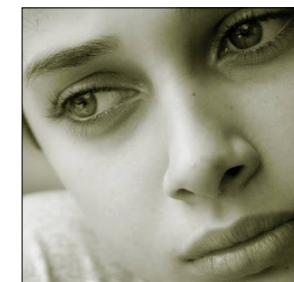


Valentine's Day! A day of giving flowers, sharing cards and thoughts of love. Valentine's Day! A day we celebrate the warmth of human relationships.

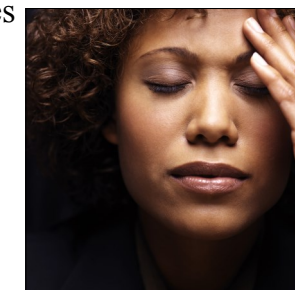
Valentine's Day! A day when we sometimes recall how alone we are, and how hard and difficult relationships can be! So, a challenge: Maybe Valentine's Day can be a day of reflecting on God's great love for us in Jesus and resting in God's care. It can be a day when we not only admit our own need for being loved, but willingly surrender to God's love and become servants in loving others.

Few things are scarier than the risk of loving someone and being vulnerable to the pain of rejection and refusal. School children exchanging Valentine cards know this. Widows and widowers know this. Singles and single parents know this. Divorcees do, too.

At times we make peace with being alone, recognizing the distinct difference between aloneness and loneliness. Occasionally our souls ache with longing to be connected, to belong to someone, somewhere. Being reminded of that longing—through holidays like Valentine's Day, or romantic movies, or seeing couples walking hand in hand—can be difficult.



James Dobson's Focus on the Family magazine for February 2007 includes an article written by a single mom who tells her story of heart break. Sheila's struggle began with her husband leaving her for another woman. She could not imagine life without a man in her life. On Valentine's Day she was alone and miserable. After four years as a single mom with three sons she again found romance. On Valentine's day her new love proposed to her as they dined by candlelight, with long stemmed roses adorning the table and love songs playing softly. And she was in heaven. For awhile.



Her new husband soon became abusive and violent. Three years of counseling, calls to the police, and court dates, concluded with their marriage ending. Sheila wrestled with God and recognized that she had not trusted God. In her emptiness she had made some poor choices.

Sheila writes of how God restored her to emotional and spiritual health. One Valentine's Day she was able to look back at that Valentine's Day when her first husband had left her, and at the Valentine's Day when she'd said yes again by candlelight. Still single, but no longer overwhelmed with loneliness, she was learning how to rest in Christ's love and peace.

(continued next page)



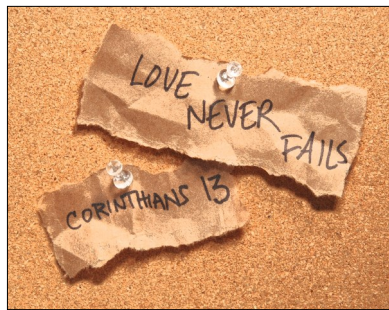
Left to right, the Youth Sunday School class: teachers Sharon & Les Moore, students Catelynn, Micaela, and Mandy on Sunday, January 22, 2017.

**T**hrough the power of the Holy Spirit, Elim Lutheran Church seeks to be a healing, equipping, and serving community of faith.

—Mission Statement

She says, "I've discovered that the best earthly relationship is a mere shadow of the perfect love [God] has for me." She continues, "Know and believe that there is no greater love than [God's]. Listen for His still small voice...He will comfort you when your heart is aching and He will be there when you cup overflows with joy. His love is everlasting. Give Him your heart. He's already given you His."

Discovering God's love in Christ can help us get past ourselves and our neediness. As we learn to rest in God's love sometimes we can find courage and strength through the Spirit's working within us to push past our own fear and loneliness. Then we are able to befriend someone else—not for the sake of feeling loved by them but simply to help them experience the joy of being loved. Sometimes that is enough reward.



Pastor Bruce

Social Ministry



**1-800-799-SAFE (7233)**  
1-800-787-3224 TTY For the Deaf

**24-Hour Crisis Line: 801.392.7273**

- 24/7 Safe Shelter and case management for Domestic Violence victims
- 24/7 Crisis line for Domestic Violence and Rape
- Transitional Housing and case management for Homeless Families
- Sr. Life Care - Free home repairs for low income elderly and disabled
- Family Enrichment Self Sufficiency Classes
- Domestic Violence Advocacy
- Rape Recovery Advocacy
- Food and Clothing Assistance
- Onsite Head Start classes
- Onsite Adult Ed. and GED classes
- Rape Prevention
- Free Legal Clinic
- Childcare

2261 Adams Avenue  
Ogden, UT 84401  
801.394.9456  
www.yccogden.org  
www.ycchope.org

Ogden 24 Hour Crisis Line 801-392-7273

### Elim's Staff Say Thank You!



To the people of Elim, thank you for your generous Christmas bonus!

Pastor Bruce Rick  
Nancy Dave Diane

### Support Elim Lutheran Church.

When you shop at [smile.amazon.com](https://smile.amazon.com), Amazon donates.

[Go to smile.amazon.com](https://smile.amazon.com)

amazonsmile

### Free Money for Elim!

New!

If you ever shop online at amazon.com, you can now have 0.5% of your purchase price donated to Elim by Amazon. This will not cost you or Elim anything!

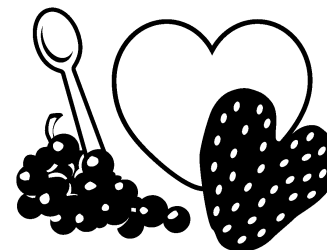
Just visit [amazonsmile.com](https://smile.amazon.com), where you can buy anything listed on amazon.com

This link <https://smile.amazon.comch/87-0335271> will take you directly to Elim's account, and then, just shop as you normally do.

# february

## Heart FRUIT SALAD

Make this cute, healthy snack for your loved ones on Valentine's Day.



### What you need:

- Adult help
- Washed fruit (watermelon, cantaloupe, strawberries, grapes)
- Knife and cutting board
- Small heart-shaped cookie cutter
- Bowl and spoon
- Mint leaves (optional)

### What you do:

1. Slice the watermelon and use the cookie cutter to make heart shapes.
2. Slice the cantaloupe and cut chunks into heart shapes.
3. Remove strawberry stems and cut berries in half. Cut a small V atop each half to form a heart.
4. Cut grapes in half.
5. Place fruit in bowl and stir.
6. Wash and cut the mint. Sprinkle strips on the salad. Enjoy!



## Love your neighbor as yourself

Valentine's Day is the perfect opportunity to live out God's love. How does Jesus say we should treat other people?

**Directions:** Find a hidden word in each sentence. For example, "the" is hidden here: (12) "It's Harry's hat he stole." The (12) means the hidden word starts on the 12<sup>th</sup> letter (ignore punctuation). Use the answers to complete Matthew 19:19, NIV.

- (1) You really like ice cream! \_\_\_\_\_
- (16) Carly has a really fat hermit crab. \_\_\_\_\_
- (21) My favorite animals are moth, ermine and eels. \_\_\_\_\_
- (4) "Hello, Vera!" called Joseph. \_\_\_\_\_
- (11) When horses neigh, boredom reigns. \_\_\_\_\_
- (17) Their daughter, Kara, sat patiently. \_\_\_\_\_
- (6) "That's yours, elf!" the fairy yelled. \_\_\_\_\_

♥ "Honor \_\_\_\_\_ and \_\_\_\_\_, and \_\_\_\_\_ your \_\_\_\_\_"

Matthew 19:19, NIV

Answer: "Honor your father and mother, and love your neighbor as yourself." Matthew 19:19, NIV

Share these activities with your kids, grandkids, and friends' kids. If you do the activities with them, each one should give you the opportunity to talk about Jesus as the Lamb of God. For a large version of the puzzle on card stock, contact Dave Thomas in Elim's office, 801-394-5543 or email [office@elimlutheran.org](mailto:office@elimlutheran.org).

(continued from previous page)

Rev. Dr. Sharon E. Watkins  
General Minister and President  
Christian Church (Disciples of Christ)

Kavneet Singh  
President American Sikh Council (ASC)

Colin P. Watson, Sr.  
Director of Ministries and Administration  
Christian Reformed Church in North America Sr.

Simone Campbell  
Executive Director  
NETWORK: A Catholic Social Justice Lobby

Rev. Paula Clayton Dempsey  
Director of Partnership Relations  
Alliance of Baptists

Ervin R. Stutzman  
Executive Director Mennonite Church USA

Patrick Carolan  
Executive Director  
Franciscan Action Network

Diane Randall  
Executive Secretary  
Friends Committee on National Legislation

Dr. Sayyid M. Syeed  
National Director of Interfaith & Community  
Alliances  
Islamic Society of North America

Dr. Susan E. Gillies  
Interim General Secretary  
American Baptist Churches USA

Jim Winkler  
President and General Secretary  
National Council of the Churches

Rev. David Steele  
General Secretary  
Church of the Brethren

Rev. Peter Morales  
President  
Unitarian Universalist Association

Rev. Ron Stief  
Executive Director  
National Religious Campaign Against Torture

Rabbi Jill Jacobs  
Executive Director  
T'ruah: The Rabbinic Call for Human Rights

Gerry Lee  
Director  
Maryknoll Office for Global Concern

Sr. Patricia J. Chappell  
Executive Director  
Pax Christi USA

Hon. Thomas H. Andrews  
President & CEO  
Unitarian Universalist Service Committee

## February Bible Readings



### Sunday, February 5, 2017 - Epiphany 5

Isaiah 58:1-9a [9b-12]  
Psalm 112:1-9 [10]  
1 Corinthians 2:1-12 [13-16]  
Matthew 5:13-20

### Sunday, February 12, 2017 - Epiphany 6

Deuteronomy 30:15-20  
or Sirach 15:15-20  
Psalm 119:1-8  
1 Corinthians 3:1-9  
Matthew 5:21-37

### Sunday, February 19, 2017 - Epiphany 7

Leviticus 19:1-2, 9-18  
Psalm 119:33-40  
1 Corinthians 3:10-11, 16-23  
Matthew 5:38-48

### Sunday, February 26, 2017 - Transfiguration of Our Lord

Exodus 24:12-18  
Psalm 2 or Psalm 99  
2 Peter 1:16-21  
Matthew 17:1-9

### Wednesday, March 1, 2017 - Ash Wednesday

Joel 2:1-2, 12-17 or Isaiah 58:1-12  
Psalm 51:1-17 or Psalm 103:8-14  
2 Corinthians 5:20b-6:10  
Matthew 6:1-6, 16-21

**Did you know that there are Bible readings appointed for every day of the year?**

Trinity Evangelical Lutheran Church in Camp Hill, PA, has them all online!

Here is the URL. <http://tinyurl.com/hcgoytx>

### Simple evangelism

A moving van is a symbol of opportunity for any active and alert church member. When a new family moves into your neighborhood or community, you can render helpful Christian service in these ways:



1. Get acquainted as soon as possible. Take the first step by introducing yourself and your family.
2. Extend warm and courteous friendship. Take them some food, or just ask if they need some help with anything.
3. Offer to answer any questions they may have about the community or neighborhood. Recommend your favorite place to eat or to grocery shop.
4. Introduce your new friends to your other friends.
5. Demonstrate an enthusiasm for Christ and his church.
6. Tell them about your church, its ministries, programs and group activities.
7. Give the names of your new neighbors to your pastor or church office for follow-up.

### Wahlen Worship Team



Elim leads the Protestant Worship Service at the George E. Wahlen Veterans' Home on January 22, 2017, with Pastor Bruce at the guitar.

Elim's next turn to lead the Protestant Worship Service at the George E. Wahlen Veterans' Home will be Sunday, February 9.

Please sign up if you would like to help with this very rewarding ministry

If you have any questions, please speak with Dave Thomas.

**Coffee Cadre**

**February**

5 Marion Landon and Katie Young

12 Coffee and Punch only

19 Widner Family

26 Joan Tonn and Bonnie Rembacz



To join "Coffee Cadre" and host a coffee hour, contact Maureen Ames.

**Maureen Ames to step down as "Coffee Cadre" coordinator.**

After quite a few years, Maureen Ames has decided that this will be her last year as Coffee Cadre Coordinator.



She's given Elim a whole year to fill her shoes, but is ready to help someone else take over the job as soon as you volunteer.

Duties include recruiting, training, and scheduling coffee hour hosts. If one or two of you are willing to accept this responsibility, speak with Joan Dawes.

Everybody enjoys the coffee fellowship hour after Worship, so let's see that this continues.

**Homebound Member**

would like to receive mail.



Jean Roberts is one of Elim's homebound members. She is in an assisted living facility in Challis, Idaho.

In Jean's Christmas card to Elim, she wrote that she never receives mail except the Scribe and the weekly mailings of the Sunday Worship Bulletin. She asked if there were someone who would write to her.

If that someone is you, please contact Dave Thomas in the office for Jean's mailing address.

**Lutheran Ladies' (and Gentlemen's) Night Out for February**



Please purchase your own tickets for the concert online or at the door. If you are interested in getting together to eat at the Sonora Grill (just around the block) before the concert, speak with Dave Thomas in Elim's office.

**Ash Wednesday**

Ash Wednesday will be on March 1, 2017, this year.

Please join us at Elim at 7:00 p.m., as the Ash Wednesday Worship Service with the imposition of ashes begins the Lenten Season.



**Joint Letter to President-Elect [Now President] Trump**

January 10, 2017

President-elect Donald Trump  
Trump Tower  
735 5th Avenue  
New York, NY 10022  
cc: Members of the 115th Congress

Dear President-elect Trump,

As representatives of many different faith communities, we are writing to convey our hope and prayers that you will robustly defend the dignity of all people and strive to advance democracy, human rights, and rule of law both here at home and around the world.

We live in an era when fear and anger have eroded the common concern for human life and human dignity. Too often lines are drawn between people of different ethnicities, religions, and cultures, and some use those lines in an attempt to justify killing, torture, and other immoral acts of brutality.

While we represent a diversity of faith traditions, we stand together in a shared belief in the God-given dignity of each person and the conviction that America should reject the forces that divide people and should protect those who are at risk of torture, rape, genocide, and other violations of human dignity. Our faith traditions teach us that standing up for the vulnerable and those in need is at integral to the well-being of our shared community. We believe that our country should champion democracy and rule of law both here and abroad.

As you begin your presidency, we pray that you will stand to protect American values like democracy, freedom of religion, and rule of law, and that you will defend people from torture, genocide, and other assaults on human dignity.

Please know that our prayers are with you. As you shoulder the burdens of the presidency, you can always reach out to any of us for counsel and prayer.

Sincerely,

Bishop Bruce R. Ough  
President, The Council of Bishops  
The United Methodist Church

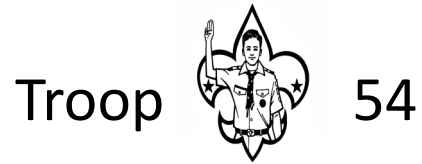
The Rev. Elizabeth A. Eaton  
Presiding Bishop  
Evangelical Lutheran Church in America

Rabbi Jonah Dov Pesner  
Director Religious Action Center of Reform  
Judaism

The Most Rev. Michael B. Curry  
Presiding Bishop and Primate The Episcopal  
Church

Rev. Dr. J. Herbert Nelson  
Stated Clerk of the General Assembly The  
Presbyterian Church (U.S.A.)

Rev. Dr. John C. Dorhauer  
General Minister and President  
United Church of Christ



Troop 54  
The Fred Lund Troop  
Elim Lutheran Church

575 23rd Street, Ogden, UT 84401-1539

801-394-5543

Troop 54 at Elim Lutheran Church is looking for boys who would like to join an inclusive Troop, and for adults who would like to be leaders. Elim does not discriminate against or attempt to recruit non-members who join our Scout troop.

Troop 54 has just ended a highly successful period where two Scouts earned their Eagles, three Scouts attended the National Jamboree, and one Scout attended the World Jamboree. All of our Scouts have now turned eighteen and “aged out” of Scouting.

We would like to see the Troop continue, and are recruiting new Scouts. Scouts must be eleven years old or older, have finished fifth grade, or have earned the Cub Scout Arrow of Light.

Troop 54’s sponsoring organization, Elim Lutheran Church, is also willing to start a Cub Scout Pack or Venture Crew if there is interest and if leaders will volunteer.

**Why Troop 54?**

- Elim’s “Fred Lund Boy Scout Fund” pays for the registration of all Scouts and Leaders.
- The Lund Fund also pays for a Scout’s first neckerchief and all required patches.
- If a Scout cannot afford a uniform, the Lund Fund will pay for his uniform shirt.
- The Lund Fund pays for all badges a Scout earns.
- The Lund Fund will pay for all leader training, and all leaders’ expenses for attending camp.
- The Lund Fund will provide financial aid for Scouts wanting to go to camp but who cannot afford the entire amount, or who need camping equipment to be able to participate.
- It is a tradition of Troop 54 to do a campout, hike, or other activity every month.

If you would like to learn more about Scouting with Troop 54, please contact the office at Elim as indicated above. If you do not have boys or Youth of Scouting age, please pass this information on to your relatives, friends, and neighbors.

**Stewardship**

**2016  
General Fund Income/Expense Comparison**

	Income	Expense	Difference
January	\$8,945.95	\$8,656.34	\$289.61
February	\$10,178.10	\$10,127.90	\$50.20
March	\$9,865.00	\$6,128.61	\$3,736.39
April	\$6,348.23	\$8,996.49	-\$2,648.26
May	\$7,318.60	\$10,017.10	-\$2,698.50
June	\$6,594.78	\$5,539.86	\$1,054.92
July	\$8,244.30	\$6,398.74	\$1,845.56
August	\$6,581.10	\$6,190.31	\$390.79
September	\$5,863.38	\$7,126.54	-\$1,263.16
October	\$7,276.69	\$5,832.54	\$1,444.15
November	\$7,685.25	\$6,242.60	\$1,442.65
December	\$26,846.67	\$13,024.48	\$13,822.19
<b>Increase/deficit</b>	<b>\$111,748.05</b>	<b>\$94,281.51</b>	<b>\$17,466.54</b>

In 2015 our income without reimbursements was \$120,229.34.  
Difference of: \$11,481.29

The above figures are the most recent figures available as the Scribe went to press.

Note: The December income includes a \$13,000 payment from the Ina Lindstrom Trust.

**Pledge Total for 2017**



In 2016, 37 households pledged \$81,125.00.

For 2017, 29 households have pledged \$53,748.00.

If you have not yet made your 2017 pledge, forms are available on the ushers’ counter at the rear of the sanctuary.

**The Simply Giving® Program**  
endorsed by Thrivent Federal Credit Union  
MAKING FINANCIAL STEWARDSHIP EASY

*By Dave Thomas*

In our household, we have a number of payments automatically deducted from our checking account. For instance, every month, the ASPCA and St. Jude’s Hospital receive their donations. Our car insurance is automatically deducted, as are quite a few other bills.

Did you know that you can make your offering to Elim the same way? Your offering can automatically be deducted from your account on a day of the month you choose, and deposited directly into Elim’s checking account.

At this time, only three members of Elim have taken advantage of this opportunity.

You can make life simpler for yourself—no more checks to write, no offering envelopes to find, no more hassles. All you have to do is fill out a form, available in Elim’s coat room or in the office, and provide a voided check. Give these to the office, and the office will take care of the rest.

You can also stop or change the amount of your donation any time you wish.

If you still want to put something in the offering plate, Simply Giving will provide you with a sticker you can put on an offering envelope, and you can put that in the plate.

Elim pays a 30 cent fee for each such transaction, but knowing that the offering will be coming in regularly, the same day every month all year round, is easily worth 30 cents. Or, you can make your donation 30 cents larger.

Why not get started with this right away? See Dave Thomas in Elim’s office to enroll.

# Biblical Archaeology and the Bible

## Top Ten Discoveries of 2016

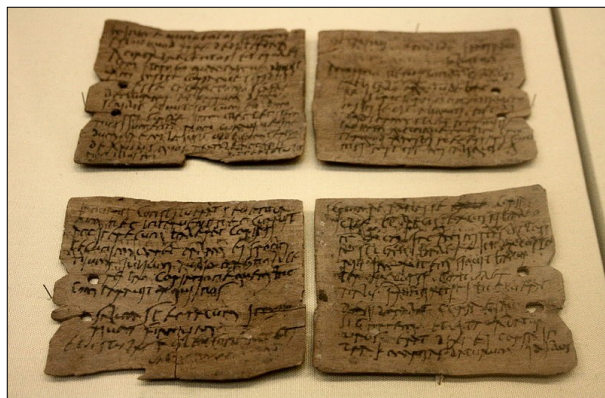


By Karlene Widner

I got to reading my *Archeology* magazine, and I found it so interesting that I want to share some of it with you. I'm going to share the "Top 10 Discoveries of the Year." I wish that I could explain each more fully, but it would take too long. 😊

### 1 - London's Earliest Writing

More than 400 wooden tablets were unearthed (from about 50 AD). They were written by ordinary citizens recording various names as well as events and transactions about London's first year.



Roman writing tablet from the Vindolanda Roman fort of Hadrian's Wall, in Northumberland (1st-2nd century AD). Tablet 343: Letter from Octavius to Candidus concerning supplies of wheat, hides and sinews. British Museum (London). Photo by Michel wal [sic]

Downloaded from [https://commons.wikimedia.org/wiki/File:Roman\\_writing\\_tablet\\_02.jpg](https://commons.wikimedia.org/wiki/File:Roman_writing_tablet_02.jpg). Licensed under Creative Commons. All rights reserved.

### 2 – Cambodia – Laser Screening

Archaeologists mounted a laser under a

helicopter for the largest project to date. They scanned (by air) over 900 square miles of the densely forested Angkor region, revealing centuries old cities that once belonged to the vast Khmer Empire. The view by laser was unobscured by vegetation – a 3 miles x 3 miles urban grid (largest in SE Asia). The ancient cities appeared in plain sight when viewed by laser.!

### 3 – France

At the end of the 7th century France was ready for a regime change. In 751 AD, the Carolingians took the throne from the previous dynasty, the Merovingian. King Pepin took the throne, which was later inherited by his son Charlemagne.

Excavations uncovered the remains of 80 men (mostly between 20 – 30) shackled together and "buried" in a mass open grave. They all died in the sand and died due to a blow to the back of the head. Two small vases were buried with them which helped them to date the find to the mid to late 7th century B.C.

### 4 – World's Oldest Dress

The world's oldest dress was found in Tarkhan, Egypt, in 1913, but just dated and put on display as the oldest dress. It was made between 3482 and 3103 B.C.

### 5 – Early Man Cave, Brumquell, France

Several ring-shaped structures made from whole and broken stalagmites were



Image of Tarkhan dress used by permission of [tripadvisor.co.uk](http://tripadvisor.co.uk). Please note the required documentation at the end of the article.\*

discovered in France. Early dating put them at 47,000 years old. Recent up to date equipment dated them to 176,000 years ago. The only "humans" in the area were Neanderthals. The explanation for this area remains a mystery.

### 6 – Peruvian Woman of Means

She was buried about 4,500 years ago in Peru. They found expensive jewelry and carved animals with her.

### 7 – Lake Turkhana, Kenya - 10,000 year old turf war

Twenty-seven individuals were involved – 21 adults + 6 children. They were evidently hunter-gatherers. Their village was never found, but the remains was a picture of pure carnage. Archaeologist Marta Mirazón Lahr discovered these human skeletons with injuries to the head, neck, ribs, knees and hands.

### 8 – Mona

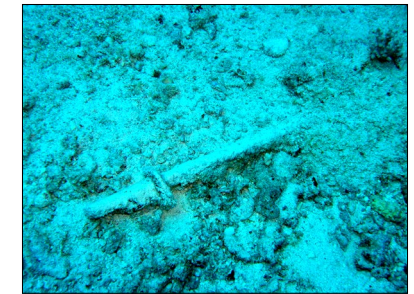


One of the Mona cave drawings.

This one was very hard to understand. It had to do with some caves in Mona – a group of small islands near Puerto Rico. It involved 2 different cultures. Spanish names, Christian symbols, and indigenous art were discovered on the cave

walls. The National Geographic has an interesting online article at <http://news.nationalgeographic.com/2016/07/cave-art-caribbean-mona-island-first-contact-archaeology/>

### 9 – Antikythena wreck in Greece



An ancient sword discovered near the Antikythena wreck.

65 B.C. Very Interesting. The wreck was discovered originally in 1900 by sponge divers near Antikythena, a Greek island in the Aegean Sea. It is the world's largest, richest and perhaps most famous wreck. The remains of a man were found in 2016, and some think there are more men.

### 10 – Salem's Last Gallows

It is thought that they have found the spot where the death of the "witches" occurred, but they have found no bodies.

\* This notice regarding the image of the Tarkhan dress is required to be displayed with the image.

[https://www.tripadvisor.co.uk/LocationPhotoDirectLink-g186338-d638489-i107671221-Petrie\\_Museum\\_of\\_Egyptian\\_Archaeology-London\\_England.html#107671221](https://www.tripadvisor.co.uk/LocationPhotoDirectLink-g186338-d638489-i107671221-Petrie_Museum_of_Egyptian_Archaeology-London_England.html#107671221)></a><br/>This photo of Petrie Museum of Egyptian Archaeology is courtesy of TripAdvisor