

# Elim Lutheran Church

Sunday School/Adult Education 9 a.m.  
Worship Service 10:00 a.m.

575 23d Street • Ogden, UT 84401  
Phone 801-394-5543 • Fax 801-394-5547  
www.elimlutheran.org • office@elimlutheran.org

NON PROFIT ORG.  
U.S. POSTAGE  
PAID  
OGDEN, UTAH  
PERMIT 607

RETURN SERVICE  
REQUESTED

# THE Elim Scribe

Volume 66, Issue 11

November 2016

## Gratitude

By Pastor Bruce Kolasch

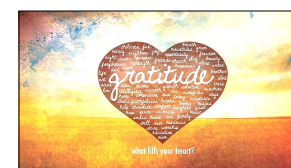


*Psalm 106:1 (NRSV)*

*“Praise the Lord!*

*O give thanks to the Lord, for He is good;  
for His steadfast love endures forever.”*

Gratitude—the posture of the soul that



expresses thankfulness for the benefit we have received that is given by others.

It is the quality of being thankful; readiness to show appreciation for and to return kindness; a feeling of appreciation or thanks.

Gratitude helps us see past ourselves. Gratitude helps us see our connection to others and to our world. We are not independent, but interdependent. We need each other. We are benefited and blessed by others around us, by our environment and world; by our Lord. Gratitude is an expression of appreciation and thanks in recognition of that connection and gift.

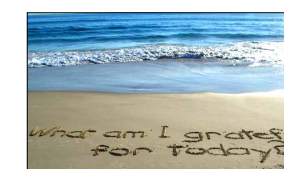
Gratitude has a healing and restorative quality. It frees us from greed. It unshackles us from fear, hatred and prejudice. Gratitude focuses on goodness in others, in God. It helps us to recognize our potential for adding to the goodness of the world. We are not victims of circumstances. We do not have to be influenced

or controlled by the evil around us. We can make a difference. And that difference starts with practicing being grateful.

November is the month of thanksgiving. It is a time for feasting, for football, for family gatherings, and for intentionally saying, “Thank You, God, for all Your benefits to us!”

I am grateful for my new connection with you and look forward to our getting to know each other as we journey as God’s people through this world together. I am grateful for God’s Spirit with us, for grace, for the never ending love God pours out on, in and through us every day. I am grateful for Jesus!

Reba and I are leaving a place in Montana we have grown to love and



people we care for. We are very grateful for our years of ministry among them. We are excited to become Utah residents, living within 10 minutes of all six of our grandchildren. We thank God for family and grandchildren! And, we are grateful for our new connection with you and look forward to a new chapter in life. My prayer is that together we continue to “count our blessings” and serve our loving and gracious God.

**DON'T  
GO  
TO CHURCH.  
BE THE CHURCH.**

**T**hrough the power of the Holy Spirit, Elim Lutheran Church seeks to be a healing, equipping, and serving community of faith.

—Mission Statement

### 2017 Flower Chart

Somebody has signed up to donate altar flowers for every Sunday in 2016, so we've put up the Flower Chart for the first quarter of 2017.

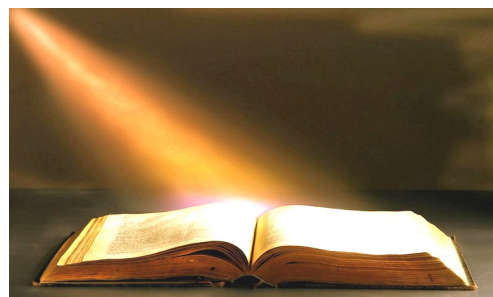


Now that we print our own Flower Chart, we can get it up much earlier than when we used to buy it, and get those Sundays in January covered.

The price remains \$25 for two beautiful bouquets. One goes to you, and the other is given to someone in our faith community who needs flowers.

Sign up today! One Sunday is already taken!

### November Bible Readings



**Sunday, November 6, 2016**  
**All Saints Sunday - Pentecost 25**  
 Daniel 7:1-3, 15-18  
 Psalm 149  
 Ephesians 1:11-23  
 Luke 6:20-31

**Sunday, November 13, 2016 - Pentecost 26**  
 Malachi 4:1-2a  
 Psalm 98  
 2 Thessalonians 3:6-13  
 Luke 21:5-19

**Sunday, November 20, 2016 - Christ the King**  
 Jeremiah 23:1-6  
 Psalm 46  
 Colossians 1:11-20  
 Luke 23:33-43

**Thursday, November 24, 2016 - Day of Thanksgiving (U.S.A.)**  
 Psalm 122  
 Daniel 9:15-19  
 James 4:1-10

**Sunday, November 27, 2016 - Advent 1**  
 Isaiah 2:1-5  
 Psalm 122  
 Romans 13:11-14  
 Matthew 24:36-44

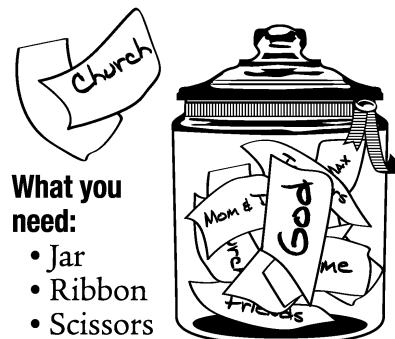
**Did you know that there are Bible readings appointed for every day of the year?**

Trinity Evangelical Lutheran Church in Camp Hill, PA, has them all online!  
 Here is the URL. <http://tinyurl.com/hcgoytx>

# November

## BLESSINGS JAR

Thanksgiving reminds us of our many gifts from God. Count your blessings all month long with this craft.



- What you need:**
- Jar
  - Ribbon
  - Scissors
  - Glue
  - 3 sheets of paper (different colors)
  - Marker or pen

- What you do:**
1. Measure and cut enough ribbon to wrap around the jar's neck, below the lid. Glue in place and let dry.
  2. Fold each piece of paper in half three times, resulting in eight rectangles per sheet. Cut along the fold lines, and you'll have 24 rectangles.
  3. Each day in November until Thanksgiving, write down one blessing from God. Then place that blessing in the jar.
  4. On Thanksgiving, open the jar and read all your blessings to your family and friends.



## Blessings from the Lord

Throughout the Bible, God blesses his chosen people. How can we receive these gifts?

*Directions: In the word search, find all the words in the box. Then write the words in the correct order on the blanks below to complete the verse.*

come you these LORD if blessings you the accompany  
 Deuteronomy All on your obey will God you and

I	J	T	Z	Z	L	M	X	N	W	C	I	Z	Y	H
X	V	U	B	M	O	O	O	V	I	O	L	T	R	T
N	L	V	L	I	R	A	D	S	L	M	R	H	A	T
B	F	C	E	Z	D	T	X	O	L	E	D	E	L	D
O	S	K	S	L	O	D	A	B	V	G	W	S	L	E
H	G	Y	S	L	R	A	W	E	Y	J	E	E	U	U
I	O	R	I	W	F	I	C	Y	O	U	R	L	R	T
Z	D	B	N	I	A	B	Y	C	V	M	R	X	C	E
G	K	D	G	Y	D	M	A	O	O	T	U	F	M	R
C	T	I	S	Z	O	M	T	E	Q	M	P	N	T	O
C	X	C	I	D	U	U	O	L	R	D	P	T	C	N
F	S	X	F	R	T	L	P	M	F	B	L	A	A	O
Y	Y	Y	O	U	H	T	U	A	P	A	I	U	N	M
E	O	K	N	U	E	A	Z	U	F	E	F	B	D	Y
T	Q	U	Y	N	I	N	O	O	V	E	O	T	Z	I

“ All \_\_\_\_\_ ”

28:2, NIV

Answer: “All these blessings will come on you and accompany you if you obey the LORD your God.” Deuteronomy 28:2, NIV

## SUB FOR SANTA 2016

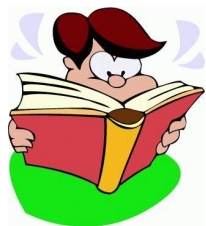
Our 10th Annual **Sub for Santa** ministry gets started this month. We're so grateful, once again, for the help and support of Elizabeth Guzman at New Bridge Elementary School (New Bridge is the new school which replaced Dee.). Forty dollars (\$40) sponsors a single student. Sign up November 6 and 13 to take part! We hope to receive \$250 from Thrivent this year as this project is available for a Community Action Event grant. You can take part in various ways or a mix of options. Here's what each entails:



Sue Munson

1. Sponsor a student. Sign up with Sue Munson during worship. Donate \$40 and turn in your money to Sue (Checks must be made out to Elim.). By mid-late November, you will be provided the name of a student, plus his or her shirt, pants, and shoe sizes to help you with the shopping. You'll also receive \$50 to do your shopping. Purchase \$50 worth of gifts for your student. Do not wrap them! Simply label them with your student's name and have them back to Elim by Sunday, December 4.

2. Donate money. Sign up with Sue Munson during worship. Give whatever amount of money you would like to go towards gifts for a student. (Make your check out to Elim.) Someone else will do the shopping for you. This is a great option for those who can't get out to shop on their own or for folks who want to give less than \$40.



3. Buy a book. Purchase a book that shares the real meaning of Christmas – in other words, the story of Jesus' birth. Once we have the names of the students we'll be sponsoring, there will be a tree with their names. Choose a student to whom you want to gift your book. Label the book with the child's name that you chose and bring it to Elim by Sunday, December 4.

4. Be a designated shopper. **Head out** shopping with the youth on Monday, November 21 We'll meet at church at 6 p.m. and **head out** together to Walmart. You'll shop in groups for your designated students.

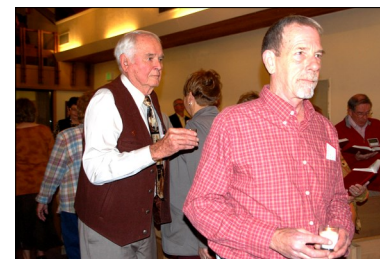


Lynn, Lydia, Hunter, Kasey and Sue shop for *Sub for Santa* on November 23, 2015.

5. Hospitality. Be part of the give-away to families on Sunday, December 13th, starting at 1:00 p.m. Provide treats, be an elf and help carry gifts from the Oasis Room to people's cars, etc.

We hope to support at least 40 students this year. Speak with Sue if you have any questions.

## All Saints Sunday



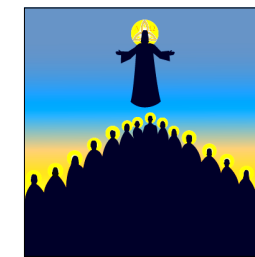
Jim Trenholm (left) and David Glismann (right) process their candles to the front of the sanctuary.

We will celebrate All Saints Sunday on November 6.

Please join us for this special day as we remember Elim members and others close to us

who have died over this past year or in other years.

As per our tradition, there will be an opportunity for you to light a candle for a loved one and process it to the front of the church.



Candles in honor of loved ones who have passed on burn at the front of the Sanctuary On All Saints' Sunday, November 1, 2015.

## Would you take Communion to homebound and hospitalized members?

In 2011, Pastor DanaLee trained a team of volunteers to take Holy Communion to our members who are homebound or hospitalized.

With Pastor DanaLee's departure, some volunteers moving away, and others being no longer able to serve, we now need to recruit more people to do this.



How often you took Communion to someone would be up to you. The only requirement for serving in this way is that you be baptized and willing to take a short training class.

If you are willing to help in this way, please speak with David Thomas or Bonnie Rembacz.

## Advent Family Nights

Advent Family Nights will return again this year. The first Sunday in Advent is November 28, and the first Advent Family Night will be during that following week.



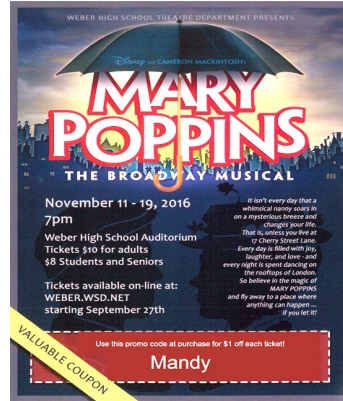
Kasey puts the star on the tree during Advent Family Night II on December 7, 2015.

Pastor Bruce and Worship and Music Director Rick Givens will be planning the activities and worship opportunities soon after Pastor Bruce begins his call here at Elim on November 1.

Please watch for more information in the Elim Weekly and in your email. If you are not on Elim's emailing list, please send an email to [office@elimlutheran.org](mailto:office@elimlutheran.org) with the subject, "Add me."

## Lutheran Ladies' (and Gentlemen's) Night Out For November

Lutheran Ladies' & Gentlemen's Night Out will be attending *Mary Poppins, the Broadway*



*Musical*, on Friday, November 18, at Weber High School. Elim's **Mandy Widner** has a part in this show.

Weber High has kindly reserved twenty seats together for this performance. To order seats in this block, please give your payment (\$9 adults, \$ 7 Students and Seniors) to Mandy in a sealed envelope. On the outside, print your name and the number of tickets being ordered.

You may also leave your ticket order with Dave Thomas, Elim's office administrator.

The deadline to order is Sunday, November 13. On November 14, any seats that were not purchased will be released to the general public.

### Gloria Wurst is in another play!

*Shards of Glass* by Clarence Socwell



The play is set in the office of "The Helping Hand" agency, whose mission is to help disadvantaged folks find government resources, but whose resident psychologist (Dr. Wilma Johnson - played by Gloria) can offer her immediate assistance. The counselor's assistant (Helen - played by **Lindsay Harding Johnson**) is the main character. Three other characters are clients: Nat, Tom, and Sonnet.

As the play unfolds, we discover, through the actions of the clients, incidents in Helen's past that inform her actions - appropriate and otherwise - in her position at the agency.

The show plays T, W Th, Nov. 15, 16, 17 at 7PM in the Gallery Theater in the Eccles Community Art Center (ECAC). Tickets at the door, beginning at 6:30 PM. Reservations by calling the ECAC at (801) 392-6935.

## Coffee Cadre

### November

6 Marion Landon and Katie Young

13 Coffee and Punch only

20 Widner Family

27 Kay Clark and Pam Deitsch



To join "Coffee Cadre" and host a coffee hour, contact Maureen Ames.

### Directory Changes

**Ursula Brandenburg**  
Harrison Regent  
4481 Harrison Blvd.,  
Room 225



### Free Greeting Cards!



When Elim member Lorraine Groothuis passed away last year, her family gave to Elim her large collection of new and handmade greeting cards. These are free to anyone who wants some of them. There are cards for all occasions in a plastic set of drawers in the nursery. Help yourself!

You may never need to buy a greeting card again!

## An Invitation to Give



Elim is blessed to have an extended community of faith through people who receive our Scribe, but cannot necessarily participate in the day to day life and ministry of the congregation.

As this year comes to a close, we invite you to consider giving an end of the year, tax-deductible gift to Elim in gratitude for and support of our ongoing ministry. It would mean so much as we try to wrap up 2016 in the "black" and make a faithful plan for 2017.

Thanks so much for your consideration and for your partnership in helping us share God's love from this corner of 23rd and Jefferson in Ogden.

In Faith,  
Congregational President Rick Givens



### 2016 General Fund Income/Expense Comparison

	Income	Expense	Difference
January	\$9,721.80	\$8,656.34	\$1,065.46
February	\$10,178.10	\$10,127.90	\$50.20
March	\$9,865.00	\$6,128.61	\$3,736.39
April	\$6,348.23	\$8,996.49	-\$2,648.26
May	\$7,435.84	\$10,017.10	-\$2,581.26
June	\$6,594.78	\$5,539.86	\$1,054.92
July	\$8,217.30	\$6,398.74	\$1,818.56
August	\$10,894.94	\$6,190.31	\$4,704.63
September	\$6,493.62	\$7,126.54	-\$632.92
October	\$0.00	\$0.00	\$0.00
November	\$0.00	\$0.00	\$0.00
December	\$0.00	\$0.00	\$0.00
<b>Increase/deficit</b>	<b>\$75,749.61</b>	<b>\$69,181.89</b>	<b>\$6,567.72</b>

The above figures are the most recent figures available as the Scribe went to press.

### How to be a "Rhino" steward



Rhinos are unique creatures. Weighing up to 5,000 pounds, covered with inflexible plates of thick skin, a rhinoceros can run as fast as 30 or 40 mph. When a rhino perceives a threat or is irritated, it charges with enormous

power. The last thing anyone wants aimed at him is a pointed 18-inch horn with all that weight and speed behind it. The rhinoceros is single-minded when it comes to doing what God made it to do — protect all members of its herd, especially the young ones. And the rhino does it immediately, without thought for itself.

Perhaps the rhino can teach us a thing or two about stewardship.

Shouldn't we be quick to serve God's kingdom as stewards through the use of our talent, time and treasure? And shouldn't we put the full force of our convictions behind our actions? Such dedication would be rhino-like in its immediacy, persistence and perpetuity.

"How to be a 'Rhino' steward" downloaded by subscription from the October 2006 edition of NewsletterNewsletter: <http://www.newsletternewsletter.com/>

(continued next column)

# You can't take it with you

(But you can make it easier on the loved ones you leave behind.)  
Part 2 in a series



**Advice from Tammy Calloway about preparing for your inevitable demise, with a comment by Dave Thomas** Tammy Calloway

Tammy had her ex-husband Walter pass away last year. She posted this advice on Facebook, and gave Elim permission to reprint it in the Scribe. This originally appeared in the November 2015 Scribe and is reprinted here because her advice is still timely.

**Tammy's advice:** A word of advice. Once a year sit down with those you love and make sure that wills are in order, and that people know what you want for a funeral and burial. Be sure life insurance, bank account, anything financial has beneficiaries named. Discuss what goes to whom, especially in families with divorced parents with kids and/or significant others who could complicate things.

Losing some one is hard enough but when those who are left have to deal with petty and/or complicated issues it can become expensive and emotional. Show your love in a well laid out estate plan!

It is not just the funeral plan, but belongings and money. Being sure that everything is in order so you don't have to deal with the court. Filing fee's are hundreds of dollars, attorneys' fees..... it goes on and on.

**Dave's comment:** I've had to work with a lot of bereaved families in my several years as office administrator at Elim, and I've seen people whose dear departed left detailed plans, and people who received no plans at all. The latter had to figure out what to do at a time when they were emotionally devastated. Best to make plans while you're still here and in your right mind.



## Wahlen Worship Team

Elim's next turn to lead the Protestant Worship Service at the George E. Wahlen Veterans' Home will be Sunday, November 27.

Please sign up if you would like to help with this very rewarding ministry

Diane Krantz preaches the sermon at the Wahlen Home on October 16, 2016.

If you have any questions, please speak with Dave Thomas.

## Holiday Boutique

Nov 5<sup>th</sup> 9am-2pm

First Presbyterian Church  
880 28<sup>th</sup> St  
Ogden – Educational Bldg



Sponsored by First Presbyterian Church, Trinity Presbyterian Church, Ogden Christian Church, UCC, Unitarian Universalist  
Lunch will be available

EXCELLENT GIFTS FOR THE HOLIDAY!

## Adult Education

by Lisa Wood



The adult Sunday school is studying angels from now until November 20. Going off of the survey that I did back in January, the top pick was Images of Christ which we did this past Spring.

I need to find out if the class wants me to do another survey or if they would just like to give me suggestions in class.

### Class Schedule for October

- October 30 The Battle Against Us Ephesians 6:10-20
- November 6 Angels and Guidance Acts 8:26-40, 10:1-48
- November 13 Guarded by Angels Acts 12:1-17
- November 20 Discerning the Spirits First John 4:1-6

## Christmas Parade of Lights

Elim is planning to have a float in the Ogden Christmas Parade of Lights on Saturday, November 28.

The parade starts at 5:30 p.m. We will gather earlier to get organized and set up.

Speak to Rick Widner, Dave Thomas, or Luke Widner (when he is on break from University) if you are interested in helping with the float, taking part in any way

More details will be available in the "Elim Weekly" and by email as the day gets closer.



Luke Widner checks the passengers in the float in the Parade of Lights on November 29, 2014.

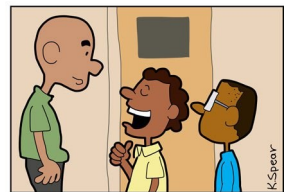
## Sunday School Fun



Sunday School fun with Lynn, Zara, and Ryan on September 27, 2015.

## Great Opportunities for Evangelism during November and December!

As the Holidays approach, we are all given a set of great events to which we could invite our friends and relatives.



"I brought a friend today. Just call me 'The Great Commissioner'."

There will be the Thanksgiving Evening Service on Tuesday, November 22, Advent worship and Advent Family Nights, the Sunday School Christmas Program, the Christmas Eve Candlelight Service, and the Christmas Day worship service.

So, why not invite a friend to join you for one of these? They might get inspired and come back! It could happen!

# Elim Pastoral Transition Update



By Rick Widner

On October 2, the Elim congregation voted to accept Pastor Bruce Kolasch to begin serving as our Pastor for a one year initial term. During this first year, Pastor Bruce will do all the same Pastoral duties that Pastor DanaLee did, along with working with the congregation on the "Transition Process"



Pastor Bruce Kolasch

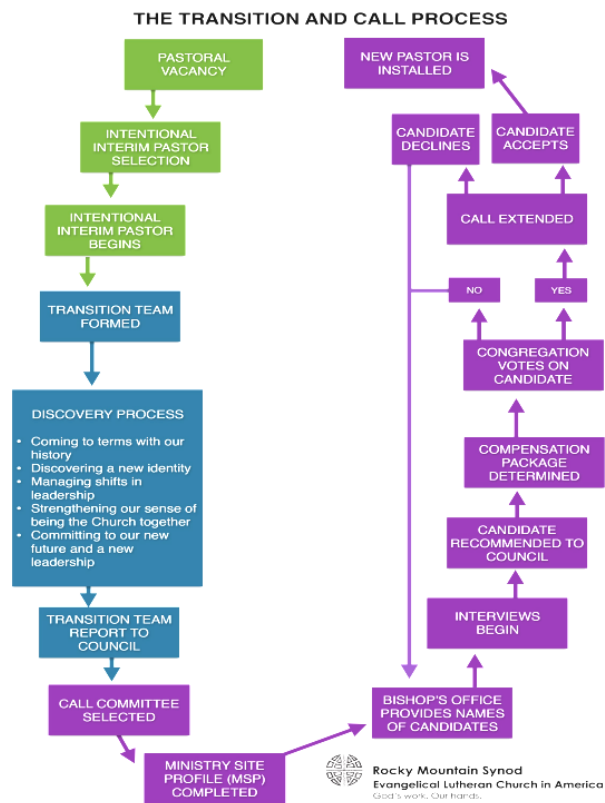
where we will dig deep into our beliefs and what the congregation feels is most important in various areas of worship, evangelism, service, and all our ministries. At the end of the one

year term, if there is mutual agreement that this is a good fit, we can extend a full call to Pastor Bruce as our **part time** pastor.

Pastor Bruce will lead us in worship beginning on Sunday November 6, and helping with confirmation on the 7. He will have a similar schedule to what Pastor DanaLee had, where there will be times he will be in the office, and times he works

from home. He has graciously agreed to our budgeted salary and benefits package, so this will not be a financial burden to the congregation.

More details to come, but I am excited for Elim to be moving forward in our faith journey with the help of Bruce Kolasch.



Rocky Mountain Synod  
Evangelical Lutheran Church in America  
God's work. Our friends.

## A Short Introduction of Pastor Bruce Kolasch



Pastor Bruce and Reba have been married for fourteen years. Their anniversary is May 31. He has seven living brothers and sisters. His mother is in her late eighties and lives in Evansville, Wisconsin, with his youngest brother and his family. His oldest son, Peter, lives in Wisconsin. His youngest son, Jacob and **Erica**, live in Pocatello, Idaho.

Reba's children and their grandchildren all live in the Draper area.

Pastor Bruce attended Concordia College in Portland, Oregon from 1971 to 1973, and graduated from St. Leo University in 1980 with a BA in Psychology. He later attended Faith Lutheran Seminary and Concordia Theological Seminary in Fort Wayne, Indiana, graduating in 1986 with a degree of Master of Divinity.

He was on active duty in the U.S. Navy for seven years, from December 1973 to January 1981. While in the Navy he served onboard the USS Constellation (CV-64) and at Naval Air Station, Norfolk, Virginia. He has been pastor at Hope Lutheran Church, Faith Lutheran Church & Preschool in Pocatello, Idaho, Zion Lutheran Church and Preschool in Ashton, Idaho, and the United Trinity Lutheran Parish in Montana, which was made up of American Lutheran Church in Baker, Montana, Peace Lutheran Church in Plevna, Montana, and St. Elizabeth Lutheran Church in Ekalaka, Montana. At this parish, he and his wife, Reba, were co-pastors.



The USS Constellation (CV64)

Reba has chosen to retire, and she and Pastor Bruce have relocated to Draper, Utah, to be close to Reba's children and their grandchildren.

Pastor Bruce brings to Elim thirty years of experience as a pastor.

We look forward to working together with him and under his leadership in the Kingdom of God.

## I shall not need

Despite the traditional wording ("The LORD is my shepherd; I shall not want"), Psalm 23 declares that God provides everything we need — not everything we desire.

"He makes me lie down ..." Sometimes our busyness is useful; other times it's how we feel in control or superior to others. God knows we need to rest and sometimes must make us do so!

"He leads me beside still waters ..." Although we often prefer noisy distractions, God knows we need quiet to hear him and have our souls restored.

"You prepare a table before me in the presence of my enemies." Rather than a boast ("Ha! See how God spreads a banquet in my honor while others look on!"), this is a reminder that God wants us to dine with our enemies. We might not be able to stand those people, but God pursues reconciliation.

In the process, "goodness and mercy ... follow me all ... my life." That's what we need the most.



"I shall not need" downloaded by subscription from the October 2001 edition of NewsletterNewsletter: <http://www.newsletternewsletter.com/>

Worship

## Thanksgiving Service

Elim's 2014 Thanksgiving Service will be at 7:00 p.m. on **Tuesday, November 22**. Please bring a non-perishable food item as part of your offering to donate to the Pastor's Pantry or to SHARE.

